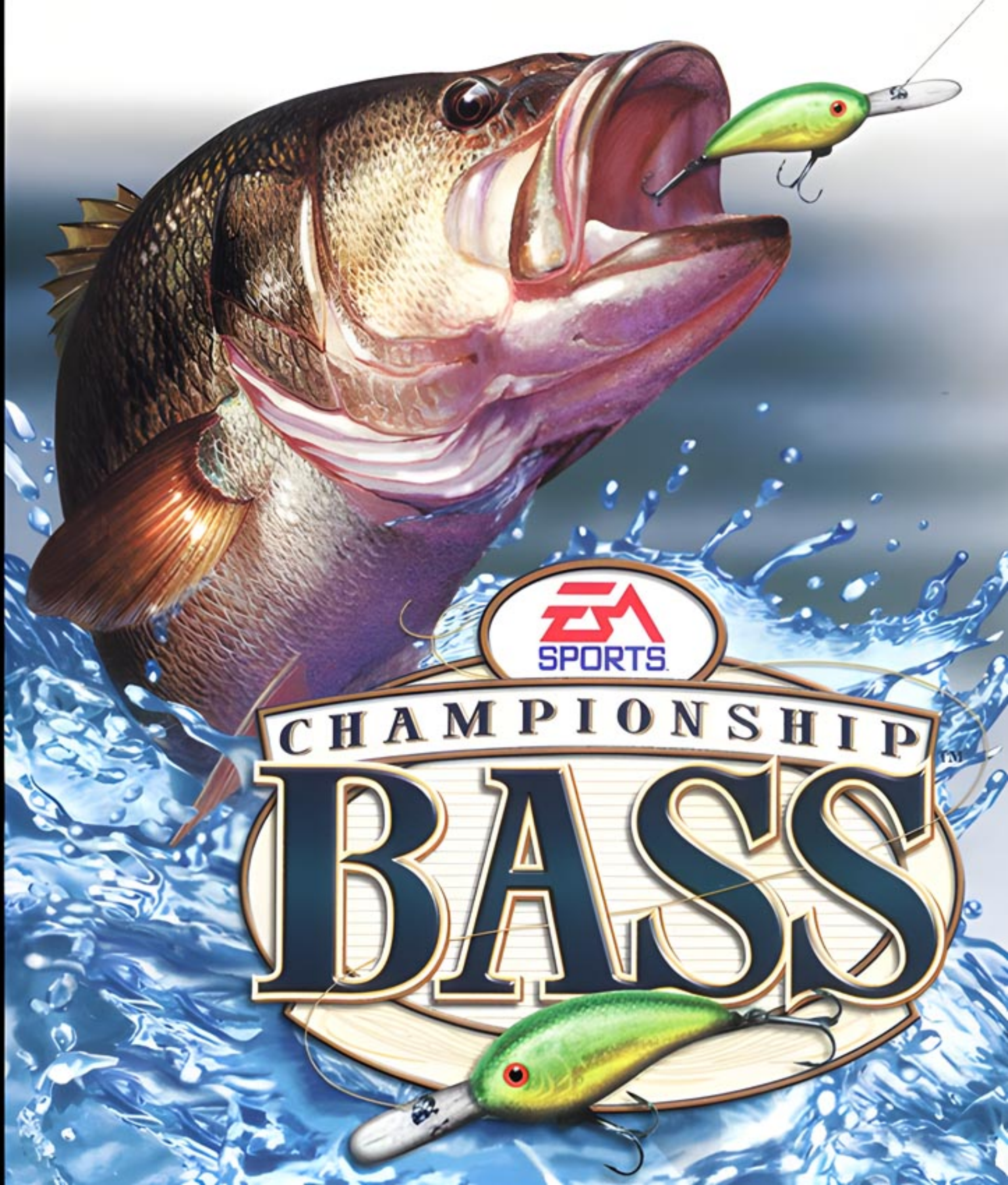




PlayStation

NTSC U/C

PlayStation®



CHAMPIONSHIP
BASS



CONTENTS

STARTING THE GAME	2
CONTROL SUMMARY	3
GAMEPLAY COMMANDS	4
INTRODUCTION	6
SETTING UP A FISHING TRIP	7
MAIN MENU	7
STARTING THE FISHING TRIP	8
ON THE LAKE	8
COMPETITIVE GAME MODES	11
CAREER MODE	11
TOURNAMENT MODE	12
CHALLENGE MODE	12
THE COMPLETE ANGLER	13
THE LAKES	13
FISHING CONDITIONS	14
TACKLE SETUP	15
MEMORY CARD FUNCTIONS	16
CREDITS	18
WARRANTY	20



For more info about this and other titles, check out EA SPORTS™ on the web at www.easports.com.



GAMEPLAY COMMANDS

Cast to any spot on the lake and reel in your line with as much (or as little) lure action and speed as you need to hook the big one. Learn the following controls and you're on your way to mastering the *Championship Bass* challenge.

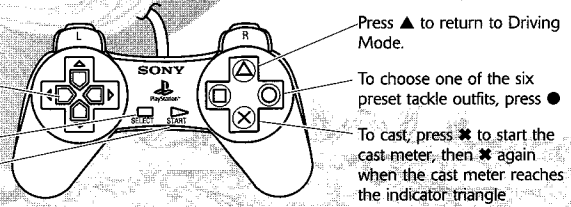
MENU CONTROLS

Highlight menu item	D-Button ↓
Change highlighted item	D-Button ↔
Select/go to next screen	✳
Cancel/return to previous screen	▲
Scroll to see more info	D-Button (when arrow appears)
Access 3D Close-up Screen for Tackle Box Setup Items	■
Sample music on the Audio Options screen	●

GETTING THERE AND CASTING

Find a sweet spot for fishing, and then throw out your line.

- Use the D-button to **drive your boat**.
- To stop driving and move the angler to casting position, press ✳. Your angler will move to the bow and prepare to cast. (Press ▲ to return to driving mode.)

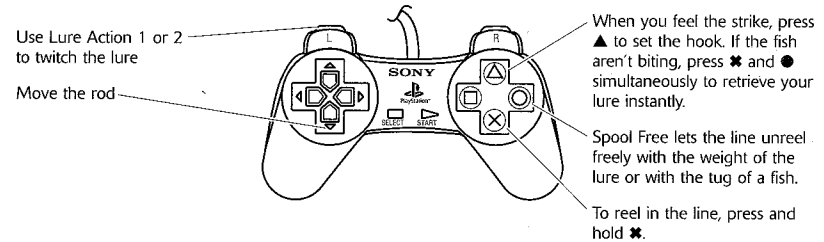


- If you're using a **fishing controller**, press ✳ and swing the controller. The harder you swing, the further you'll cast.
- To activate the underwater camera when driving or before casting, press **R2**.
- To toggle map, time, temperature, and wind indicators **ON/OFF**, press **L2**.

EA TIP To activate the electric motor and move the boat quietly while you're standing on the bow, press and hold **L1** and press the D-Button in the direction you'd like to go.

REELING

The strike is only the beginning. Getting the fish from the water and into the boat requires knowledge and skill, and sometimes a little luck doesn't hurt.



EA TIP Use the Lure Action buttons (**L1** or **L2**) to move your rod slightly to add some action to your lure. This motion mimics a wounded baitfish and makes the lure irresistible to bass.

EA TIP The drag (■) controls the amount of line coming off the spool. Set it **LOW** to allow a fighting fish to take line out without breaking it. Set it to high when you want to put more pressure on the fish and keep him from shaking off the hook.



TIP An experienced angler knows when to reel 'em in fast (*** + R1**) and when to take his time (*** + R2**). Watch your line tension and the degree to which the fish is struggling and react accordingly. If your line breaks, you'll never know how enormous that fish was.

INTRODUCTION

We've stocked these lakes with the trophy bass of your wildest dreams. Choose the best tackle and bring all of your fishing know-how because these fish are hard-hitting, quick-striking lunkers with attitude to spare. It's time to get out on the lake and prove you have what it takes to land even the most stubborn old bucketmouth.

FEATURES

- The only bass fishing game with level-based gameplay: Plunge right into the action with intense, arcade-style scenarios.
- Lakes full of monster bass: Each of the huge lakes feature record-breaking bass, with plenty of weedy areas, dock pilings, and break lines to attract them. Unlock the bonus lake to find even more lunkers in the game.
- These are hard fighting fish: After you hook 'em, you'll have to fight to land 'em. Big strikes, swerving, and diving – these fish will challenge the best angler.
- 4 modes of play – choose to fish your way, whether it's a leisurely Fishing Trip or the competition of Challenge, Tournament, and Career.
- Win bonus lures that catch bigger, smarter bass. They'll hit – it's up to you to reel 'em in, if you can.
- 4 species of fish – catch bluegills and catfish as well as largemouth and smallmouth bass.

SETTING UP A FISHING TRIP

Imagine the perfect day of fishing and bring it to life in Fishing Trip mode. You control all of the conditions and fish with the tackle you want, for the fish you want, how and when you want. Fishing Trip mode allows you to hone your fishing skills without the pressure of competition. You have the whole day to fish, so there's no excuse for not landing a prize lunker.

After starting the game (> *Starting the Game* p. 2), you proceed to the Main Menu.

MAIN MENU

Select your game mode.

FISHING TRIP

The ideal mode for the novice angler or for the experienced fisherman wanting to perfect his technique. Set up a Fishing Trip where you determine all the conditions from location and weather to water quality and fishing pressure. (> *Starting the Fishing Trip* p. 8.)

CAREER

Fish your way through an entire season of world-class bass tournaments. Finish in the overall top ten after six qualifying tournaments to earn a spot in the Championship Bass Classic. (> *Career Mode* p. 11.)

TOURNAMENT

Take on a full field of competition in a one-day tournament. Set all the conditions yourself, or let the game determine them for you. (> *Tournament Mode* p. 12.)

CHALLENGE

Unlock bonus lures along the way as you complete each level of the Championship Bass Challenge. (> *Challenge Mode* p. 12.)

LAKE RECORDS

Compare today's catch to your past efforts for each lake and each species of fish.

OPTIONS

From this menu, you can choose a male or female angler, adjust your audio and vibration settings, and save your preferences to a Memory Card. (> *Options Menu* p. 11.)

When you've picked a mode and set your options, proceed to the lake. It's time to see if you can land the big ones.

- For more information about your tackle box, fishing conditions, and the lakes, > *The Complete Angler* p. 13.

STARTING THE FISHING TRIP

This section gets you to the lake in the quickest possible way. For information about your Tackle Setup, Fishing Conditions, and the lakes, > *The Complete Angler* p. 13.

To start a Fishing Trip:

1. Select Fishing Trip from the Main Menu. Read the Fishing Trip description, and then press **X**. The Lake Selection screen appears.
2. D-Button \leftrightarrow to choose your lake (to review information D-Button \downarrow), and then press **X**. The Fishing Conditions screen appears. (> *Fishing Conditions* p. 14).
3. D-Button to review/change conditions. Press **X** to get to the lake. (> *On the Lake* below.)

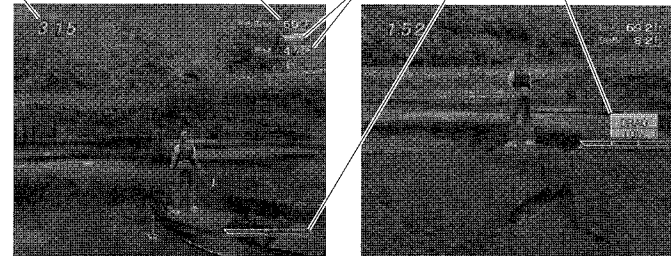
ON THE LAKE

You're up before dawn and ready to go. Here's what you'll need to know to come home with more than a sunburn and an empty creel.

- For complete gameplay controls, > *Gameplay Commands* p. 4.

GAME SCREEN

Time of day/Time remaining Water temperature Wind Direction and Speed Casting Meter When reeling, toggle drag HIGH/LOW



To Cast:



To activate the casting meter, press **X** while standing on the bow of your boat.

Press **X** again to release when the meter reaches the target point.

To Cast using the Fishing Rod controller:

1. Press **X** to begin your cast.
 2. Tilt the fishing rod controller back slowly and move it forward to release your cast. The harder you move it forward, the farther your cast goes.
- If you tilt the controller back too quickly or with too much force, the controller may read that movement as your cast, so use a gentle touch.

To Reel 'em in:

- ↳ When you get a strike, press **▲** to set the hook, and then press **✖** to reel.
- ↳ To reel with the Fishing Rod controller, crank the reel in either direction. The faster you crank, the faster you'll reel.

TIPS FOR LANDING THE BIG ONE

Any luck? If you're an angler you've often heard this question, but you know that catching a fish takes a lot more than good luck. Here are some basic tips to up your odds.

- ❑ When you're fighting the fish, listen for suggestions from the announcer. He'll let you know when your line tension is too high.
- ❑ If your fish resists, it's best to stay calm. Use **✖ + R2** to reel him in slowly and D-Button **↓** to lower your rod. Set your drag to "Low" (press **■** to adjust drag) to give that bass some room to maneuver.
- ❑ If he is really fighting, or if he's a huge fish, you can "free spool" (press **●**) as a last resort. Let the fish take as much line as he wants, then reel him in after he's lost some of his fight.
- ❑ When the fish is not resisting, land him quickly with fast retrieve by pressing **✖ + R1**.

SELECT MENU

↳ To display the Select Menu during gameplay, press **SELECT**. The following options are available.

- MENU View Pro Tips, Lake Records, and Fishing Log, and access the Tackle Setup and Live Well.
- OPTIONS Access Options menu.
- SAVE Access Memory Card screen (Not available in Challenge Mode). (➤ *Memory Card Functions* p. 16).
- QUIT GAME Leave the lake and return to the Main Menu.

↳ Press **▲** to return to the lake and resume fishing.

OPTIONS MENU

1. To display the Options menu during gameplay, press **SELECT** when your line is out of the water to access the Select Menu.
2. D-Button to select Options, and then press **✖**.
3. Press **▲** to return to the Select Menu.



NOTE: Default settings in this manual are listed in **bold** type.

CHANGE ANGLER

Choose a **male** or female angler.

AUDIO

Go to the Audio screen to adjust music and other sound options. When one of the music settings is highlighted, press **●** to hear the selected song.

VIBRATION

When the Vibration option is **ON**, you really feel the nibbles and monster strikes. (Only available when a supported controller is plugged in.)

SAVE OPTIONS

Access your Memory Card and save your settings (➤ *Memory Card Functions* p. 16).

COMPETITIVE GAME MODES

CAREER MODE

Career mode is your opportunity to compete against some of the best anglers and prove that you aren't just telling fish stories. Finish in the top ten in the overall standings in the 6 qualifying tournaments to earn a spot in the championship tournament, the Championship Bass Classic. Win this tournament, and you'll unlock the bonus lake—Crescent Lake.

- ❑ Your score is based on the total pounds of bass in your Live Well at weigh-in.

To start a Career:

1. From the Main Menu, select Career. The Career Description screen appears. Press **X** to advance.
2. Review the regulations, including scoring and eligibility requirements for the qualifying tournament, and press **X** to get to the lake. (> *On the Lake* p. 8.)

TOURNAMENT MODE

In Tournament mode you take on some of the top anglers in a one-day tournament to see who can haul in the biggest catch. Try out all the different weather and water settings and see if you can still stay champ.

To start a Tournament:

1. From the Main Menu, select TOURNAMENT. The Single Tournament description screen appears.
2. Choose a lake for the tournament, and then press **X**. The Fishing Conditions screen appears. (> *Fishing Conditions* p. 14.)
3. Review/change fishing conditions and press **X** to advance to the Tournament Rules screen.
4. Review the tournament rules and regulations and press **X** to get to the lake. (> *On the Lake* p. 8.)

CHALLENGE MODE

Use your wits and beat the clock in the fast-paced action of Challenge mode. Complete all challenge levels to unlock all the bonus lures and the bonus bass lake (Crescent Lake) for Tournament and Fishing Trip modes.

- When you complete a challenge level, you are rewarded with a Pro Tip and, in some levels, a bonus lure. Be sure and read the tip for advice on how to best handle your hardware and adapt to the conditions.

To start Challenge mode:

1. From the Main Menu, select CHALLENGE. The Bass Challenge Introduction screen appears.
2. Press **X**. The Goal Screen appears.
 - The Goal screen contains your objective for the level, including the number of fish you must catch.
3. Press **X**. The Conditions and Settings screen appears. (> *Fishing Conditions* p. 14.)
4. Press **X** to get to the lake. (> *On the Lake* p. 8.)

THE COMPLETE ANGLER

The more knowledge you gain about your environment, your gear and the fish you're after, the more success you'll have catching the big ones. Brush up on the basics of bass fishing to increase your success at the scales.

THE LAKES

There are three main lakes in *Championship Bass*. In addition to these, there is a bonus lake that you can unlock by winning the Bass Championship Classic in Career mode or by finishing all Challenge levels.

LAKE OF THE PINES

A natural, stain water fishery, Lake of the Pines is fairly shallow, with a diversity of bass habitats. Largemouth bass and catfish are found in its waters.

CLEAR LAKE

A man made reservoir, Clear Lake offers a wide range of shallow to deep water bass habitats for many smallmouth bass and bluegill.

VALLEY RESERVOIR With excellent drop-offs and breaklines, this reservoir boasts a productive in-shore habitat for bass.

CRESCENT LAKE Are you skilled enough to unlock this bass fishing paradise?

SCOUTING A SWEET FISHING HOLE

An experienced angler can spot a good honeyhole without much trouble. Until you develop an expert eye for such spots, use your instincts and the following tips to scout out a prime location.

- Fish like the shelter of weeds and structures. These places provide shade and serve as good hiding places. You can often find a few fish where you see foliage poking up through the water.
- Fish like dropoffs because they provide access to shallow areas where baitfish dwell. If you spy a dropoff, it's a good place to sink your lure.
- Pay attention to the water temperature. It should give you a clue about the depth where you'll find suspending bass.

FISHING CONDITIONS

Different conditions call for different tactics. As you gain experience, you learn to adapt your strategy to the surrounding conditions.

MONTH Fish are vulnerable when spawning. If you know the spawning month or season for the fish you're after, you can catch your limit quickly. Note that changing the month affects water temperature.

TODAY'S WEATHER The weather gives you an indication of whether fish are hiding in the shade or are venturing out. It also tells you how actively they're feeding, how easily spooked and where they're located.

WATER TEMPERATURE All bass species prefer cooler water from about 67° to 78°F, with smallmouth bass preferring slightly cooler water than largemouth. If it's colder than that, you'll have to place your lure at just the right depth to get a strike.

QUALITY OF WATER The clarity of the water affects what lure colors bass are attracted to. In clear water bass strike at natural color baits, but in stained and or muddy water, they're more likely to hit bold and contrasting colors.

FISHING PRESSURE Indicates how many anglers have been fishing these waters. If fishing pressure is HIGH, the fish are more wary and selective about when and what they strike.

START TIME The time of day affects fish behavior. Depending on the season, bass might be more active at certain times of the day.

TACKLE SETUP

A key to getting the bass to bite is knowing your conditions and grabbing the right gear from your tackle box. Using the right gear for the environment can mean the difference between reeling 'em in and coming home empty-handed.

To change your tackle:

1. From the Tackle Setup screen, D-Button ↔ to review the preset tackle outfits, then press ✖ to make your own custom combination. The Lure screen appears.

EA TIP Learning more about your gear gives you a distinct edge on the water. To view detailed information about any of the gear, highlight a specific item, and then press ■.

- In Challenge mode the tackle is assigned for the first six levels. In subsequent levels, you can choose from the available tackle.

- Use the D-Button to find the lure you want and press **X** to select it. The Rig screen appears if you've chosen a lure that works with a rig (e.g., Plastic Worm); otherwise the Color screen appears.
 - Select a rig (if available) and then choose natural or attractor colors. Press **X** to proceed to the Line screen.
- EA TIP** Natural colors suggest baitfish and food sources; attractor colors are best in stained or muddy water. If the fish aren't striking with one color scheme, try the other.
- Choose your line, and then press **X** to advance to the Rod and Reel screen.
 - After selecting your rod and reel, press **X** to return to the Tackle Setup screen. A prompt asks you to confirm your changes and continue. Highlight YES and press **X**.
 - Select GO FISH and press **X** to return to the lake.

USING YOUR GEAR

Knowing *which* gear to use *when* is only part of the equation. It's essential for you to learn *how* to use your equipment. Reading the on-screen tips provides valuable information for any angler.

Don't be afraid to try different combinations. Try using different techniques and equipment to provoke a strike. What worked once may not work again, depending on many factors such as weather, time of year and location. Be prepared to change tactics and equipment; experimentation often leads to success on the lake. Remember: the fish are smart, so you'll need to be smarter.

MEMORY CARD FUNCTIONS

Use your Memory Card to save your Options, Fishing Trips, Tournaments, Careers, and Challenges.

To save a game:

- After you weigh in (in Fishing Trip, Tournament, or Career modes) or finish a Challenge Level, a menu appears. Select SAVE from this menu.
- Highlight Memory Card Slot 1 or Memory Card Slot 2 and press **X**.
- A list of the "folders" saved on that Memory Card appears. Highlight the folder to save and press **X**.



NOTE: When you save, you save data from all modes you have played since Sign In or Load, not just the mode you're currently playing.

- It is possible to save 3 "folders" per Memory Card. All of the angler's accomplishments for each game mode are saved in his/her folder.
- You can also save a game in progress if you choose Save from the Select Menu in Fishing Trip, Tournament, or Career modes.

To load a saved game:

- From the Title screen, select LOAD. The Load menu appears.
- Select Memory Card Slot 1 or Memory Card Slot 2.
- A list of the folders saved on that Memory Card appears. Highlight the folder to load and press **X** to load your data.



PASSWORDS: At the end of a challenge level, a password appears. Make note of this password (taking care to differentiate between upper- and lowercase letters). You can use this to resume your progress in Challenge Mode without the use of a Memory Card.



NOTE: Never insert or remove a Memory Card when loading or saving files.