

GAME BOY ADVANCE

AGB-BHGE-USA

GUNSTAR SUPER HEROES™



INSTRUCTION BOOKLET

SEGA

<http://www.replacementdocs.com>

PLEASE CAREFULLY READ THE SEPARATE HEALTH AND SAFETY PRECAUTIONS BOOKLET INCLUDED WITH THIS PRODUCT BEFORE USING YOUR NINTENDO® HARDWARE SYSTEM, GAME PAK OR ACCESSORY. THIS BOOKLET CONTAINS IMPORTANT HEALTH AND SAFETY INFORMATION.

IMPORTANT SAFETY INFORMATION: READ THE FOLLOWING WARNINGS BEFORE YOU OR YOUR CHILD PLAY VIDEO GAMES

WARNING - Seizures

- Some people (about 1 in 4000) may have seizures or blackouts triggered by light flashes or patterns, such as while watching TV or playing video games, even if they have never had a seizure before.
- Anyone who has had a seizure, loss of awareness, or other symptom linked to an epileptic condition should consult a doctor before playing a video game.
- Parents should watch when their children play video games. Stop playing and consult a doctor if you or your child have any of the following symptoms:

Convulsions

Eye or muscle twitching

Loss of awareness

Altered vision

Involuntary movements

Disorientation

To reduce the likelihood of a seizure when playing video games:

1. Sit or stand as far from the screen as possible.
2. Play video games on the smallest available television screen.
3. Do not play if you are tired or need sleep.
4. Play in a well-lit room.
5. Take a 10 to 15 minute break every hour.

WARNING - Repetitive Motion Injuries and Eyestrain

Playing video games can make your muscles, joints, skin or eyes hurt after a few hours. Follow these instructions to avoid problems such as tendinitis, carpal tunnel syndrome, skin irritation or eyestrain:

- Avoid excessive play. It is recommended that parents monitor their children for appropriate play.
- Take a 10 to 15 minute break every hour, even if you don't think you need it.
- If your hands, wrists or arms or eyes become tired or sore while playing, stop and rest them for several hours before playing again.
- If you continue to have sore hands, wrists or arms or eyes during or after play, stop playing and see a doctor.

WARNING - Battery Leakage

Leakage of battery acid can cause personal injury as well as damage to your Game Boy. If battery leakage occurs, thoroughly wash the affected skin and clothes. Keep battery acid away from your eyes and mouth. Leaking batteries may make popping sounds.

To avoid battery leakage:

- Do not mix used and new batteries (replace all batteries at the same time).
- Do not mix alkaline and carbon zinc batteries.
- Do not mix different brands of batteries.
- Do not use nickel cadmium batteries.
- Do not leave used batteries in the Game Boy. When the batteries are losing their charge, the power light may become dim, the game sounds may become weak, or the display screen may be blank. When this happens, promptly replace all used batteries with new batteries.
- Do not leave batteries in the Game Boy or accessory for long periods of non-use.
- Do not leave the power switch on after the batteries have lost their charge. When you finish using the Game Boy, always slide the power switch OFF.
- Do not recharge the batteries.
- Do not put the batteries in backwards. Make sure that the positive (+) and negative (-) ends are facing in the correct directions. Insert the negative end first. When removing batteries, remove the positive end first.
- Do not dispose of batteries in a fire.

The official seal is your assurance that this product is licensed or manufactured by Nintendo. Always look for this seal when buying video game systems, accessories, games and related products.



Nintendo does not license the sale or use of products without the Official Nintendo Seal.

THIS GAME PAK WILL WORK ONLY WITH THE GAME BOY® ADVANCE OR NINTENDO DS™ VIDEO GAME SYSTEM.

Important Legal Information

Copying of any video game for any Nintendo system is illegal and is strictly prohibited by domestic and international intellectual property laws. "Back-up" or "archival" copies are not authorized and are not necessary to protect your software. Violators will be prosecuted.

This video game is not designed for use with any unauthorized copying device or any unlicensed accessory. Use of any such device will invalidate your Nintendo product warranty. Nintendo (and/or any Nintendo licensee or distributor) is not responsible for any damage or loss caused by the use of any such device. If use of such device causes your game to stop operating, disconnect the device carefully to avoid damage and resume normal game play. If your game ceases to operate and you have no device attached to it, please contact the game publisher's "Technical Support" or "Customer Service" department.

The contents of this notice do not interfere with your statutory rights.

This booklet and other printed materials accompanying this game are protected by domestic and international intellectual property laws.

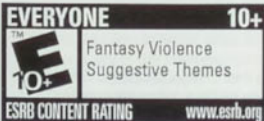
Rev-D (L)

Thank you for purchasing Gunstar Super Heroes™. Please note that this software is designed for use with the Game Boy® Advance. Be sure to read this instruction booklet thoroughly before you start playing.

GUNSTAR SUPER HEROES™

CONTENTS

STORY	4
STARTING THE GAME	6
HOW TO PLAY	8
CHARACTERS	18



LICENSED BY



NINTENDO, GAME BOY, GAME BOY ADVANCE AND THE OFFICIAL SEAL ARE TRADEMARKS OF NINTENDO. © 2001 NINTENDO. ALL RIGHTS RESERVED.

STORY

In the past...

Two heroes stood up against the Destructor, the God of Ruin known as Golden Silver.

After a mighty battle, these heroes defeated the God of Ruin at the Moon. However, when the heroes defeated the God of Ruin, it exploded, resulting in the creation of four new moons that eventually began to orbit the Earth.



Many years passed, and the moons were colonized. And so began an era of prosperity.

However, a fifth moon has recently emerged. A "machine" moon created by an organization only known as the Empire.

This man-made satellite looms ominously. It is apparently a part of the Empire's master plan to resurrect the God of Ruin once more, its obsession since its discovery of a relic known as the Megalith.

However, the Empire's plan hasn't gone unnoticed. On the Earth, the organization known as "3YE" has secretly created an elite unit to counter the Empire's plan.

In recognition of the past heroes, this elite unit has been given the codename "Gunstar Super Heroes."



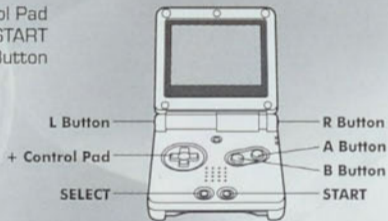
STARTING THE GAME

During the Title Screen, press **START** (or **A Button**) to display the Main Menu.



● MENU CONTROLS

- Select Menu Item + Control Pad
- Enter Selected Menu Item **A Button/START**
- Cancel/Go Back One Step **B Button**



SOFTWARE RESET

Any time during the game, press the **START**, **SELECT**, **A** and **B** Buttons simultaneously to reset the game and return to the Title Screen.

6

● MAIN MENU

RED/BLUE

Select either **RED** or **BLUE** to play the game with the selected character. Next, select the difficulty level of the game (**EASY**, **NORMAL**, **HARD**). Then select one of the following:

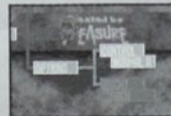


- NEW DATA** Available only when you play the selected Character/Difficulty Level combination for the first time. Select to start the game.
- CONTINUE** Continue the game from any stage you have already completed or entered. Select this to display the Stage Select Screen.
- DELETE DATA** . . Delete the game data for the selected Character/Difficulty Level. When confirmed, select **YES** to delete; **NO** (or **B Button**) to cancel.

Game data is created for each Character/Difficulty Level. The game data contains information such as the stages cleared, the top score for the stage completed and amount of life left at certain areas in the stage.

OPTIONS

- CONTROL** Change the button assignments for the weapon attacks (see p.12).
- BRIGHT** Change the brightness level of the screen.



7

HOW TO PLAY

● STAGE SELECT

When you CONTINUE the game (p.7) or after you complete a stage, the Stage Select Screen will be displayed. You may select and start from any stage available, including the stage you just completed. Each stage consists of a multiple number of areas. If a stage has been played before, partially or completely, you can start from any area you have completed. Use the + Control Pad $\leftarrow\rightarrow$ to select the stage, and $\uparrow\downarrow$ to select the area (if available).

If you started with NEW DATA, you will automatically start the game from EARTH (first stage).

- 1 Selected Stage.
- 2 Areas available to start.
- 3 Stage/Continue Records.

Displays the Stage Record when the Area cursor is at 1; otherwise the Continue Record is displayed.

- 4 Amount of Life at the start of the Stage/Area.



● STAGES – CONTROLS & GAME SCREENS

In Gunstar Super Heroes, the stages consist of 2 to 5 action areas of different types, with different controls. Here, the controls and the screens for each type of action area will be explained separately.

NORMAL ACTION AREAS

These are the basic action areas, moving sideways (and up and down if needed). The majority of this game features this area type.

- 1 Player's Life. The game will end, if this is reduced to zero.
- 2 Weapons. Highlighted icon is the weapon currently in use.
- 3 Supercharge Gauge (p.11).
- 4 Score.
- 5 Enemy's Life. Displayed when the Stage Boss appears (and also when you shoot at some of the stronger enemies in the area).



• Controls for Normal Action Areas

The arrows indicate the directions of the + Control Pad entered.

Movement/Aim for shots	+ Control Pad
Jump	A Button
Weapon Attacks	See the chart on p.12
Change Weapon	L Button
Pick Up an Item	↓ and B Button
Sliding Attack	↙/↘ and A Button
Jumping Uppercut	↑ and A Button
Side Kick	While in air, ←/→ and A Button
Drill Kick	While in air, ↙/↘ and A Button
Drop Kick	While in air, ↓ and A Button
Triangle Kick	While in air, press the + Control Pad towards the wall and A Button
Descend floor (hang down)	Above the floor you can go through, ↓ and A Button
Somersault Kick	While hanging down, ↑ and A Button

Note: Except for the Triangle Kicks, you may kick while airborne only once.

• Moving with a Force Mecha

In FORCE CANYON, you cannot jump. Instead, change your position on the screen by pressing the A Button. There are 3 positions you can move among, regardless of whether you're moving horizontally or vertically. You can control the position you move to from the center position by using the + Control Pad simultaneously with the A Button.



• Weapon Attacks

Each character has 3 kinds of weapons, which you can change with the L Button. All weapons can be shot in succession for rapid firing (the rate varies with the type of weapon). You can also attack with a sword for a close range attack. See the next page for button assignments.



Attacking the enemies will also charge the Supercharge Gauge. Fire your Supercharge when the gauge flashes. The characteristics of the Supercharge are tied directly to the weapon in use, so a Chaser Supercharge tracks enemies, just like a Chaser weapon does. Each Supercharge has its own gauge that must be filled adequately in order to use. Note also that the amount of charge on each gauge will carry over to the next Stage/Area.



• Button Assignments for Weapon Attacks

The button assignments for Weapon Attacks can be selected in the **OPTIONS** menu (p.7).

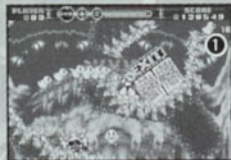
	NORMAL A	NORMAL B	SIMPLE A	SIMPLE B
Normal Shot *1	B Button	B Button	—	—
Begin Rapid Fire *1	Hold B Button	Hold B Button	B Button	B Button
Stop Rapid Fire *1	Release B Button	Release B Button	B Button and R Button	B Button Twice
Shoot at Fixed Direction *2	Hold B Button and R Button	Hold R Button	Hold B Button	Hold B Button
Shoot from Fixed Location *3	Hold R Button	Hold B Button and R Button	Hold B Button and R Button	B Button twice and Hold
Sword Attack	Tap B Button	Tap B Button	Tap B Button	R Button
Supercharge	R Button Twice	R Button Twice	R Button	B Button and R Button

- *1 You shoot and move (if possible) in the same direction the + Control Pad is entered.
 *2 You continue to shoot in the direction of the + Control Pad when this button (combination) is pressed, regardless of the + Control Pad direction entered afterwards, until released. You will move in the direction of the + Control Pad entered.
 *3 You will stand still at the location and shoot in the direction of the + Control Pad entered.

COBIT VILLAGE/SAVE THE CHICKS

The objective in this area is to rescue the chicks scattered throughout the area, and guide them all to the EXIT. Touch a chick to make it follow you. If you take damage from an enemy, all the chick(s) following you will go back to their original location. The more chicks you can lead at one time to the EXIT, the higher your score will be.

① Number of Chicks Remaining



SKY ROAD/AIR DRIFT and IMPERIAL MOON/SIGN OF RUIN

In these areas, you will be on top of a spacecraft. You will not be able to move or jump. However, you can control the rotation of the spacecraft you're on by using the + Control Pad ←→. Controls are otherwise the same as the normal action areas.



UNBLINKING CITY/LIGHTNING STRIKE and G-ARC/SPACE STRIKE

In these areas, you guide your spacecraft in a top/down or side view.



Movement	+ Control Pad
Rotate Spacecraft	L Button/R Button
Missiles (Lightning Strike area only; shoot at ground enemies)	A Button
Shoot	B Button

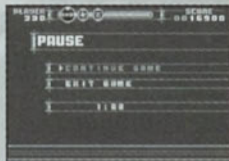
EVENT SCENES

During the game, there are event scenes with story and dialogue. Press the A Button (or ↓ on the + Control Pad) to read the next lines. Press START to skip.




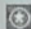
● PAUSE MENU

Any time during the game (except during between-the-stages event screens), press START to pause the game and display the Pause Menu. Select **CONTINUE GAME** (or simply press START) to resume the game. Select **EXIT GAME** to quit the game (select **YES** to confirm your action).



● ITEMS IN THE GAME

During the game, if you destroy certain objects or enemies, an item may appear. There are two kinds of items. Note that these appear only in the normal action areas.

-  **LIFE ITEM:** Increases the amount of your Life by 10.
-  **SUPERCHARGE ITEM:** Increase the Supercharge Gauge.



NOTE ON LIFE

By collecting Life Items, you may have more life than when you started the stage. However, regardless of the amount of life left at the end of the stage, when you begin a new stage, your life will be reset to the standard life for the difficulty level you're in. Note also that there is an upper limit to the amount of Life.

● RESULT SCREEN

After the completion of each stage, information pertaining to your performance will be displayed. If you did not complete the stage, the result screen will show information up to your last point. If either the Initial Area Score or the Elapsed Time to start certain areas is better than the previous record, you will be prompted to enter your name (see next page).

Here, use the + Control Pad $\uparrow\downarrow$ to scroll the screen. Press the B Button to view the previous record. You can also use the + Control Pad $\leftarrow\rightarrow$ to view records of other stages. Press the A Button/START to advance.



● NAME ENTRY

If you break record(s) in any category, you can enter your initials (up to 3 letters) here.



When done, select **SAVE** to save your record. If you select **DON'T SAVE**, your new record will not be saved.






NOTE: When your progress is saved, the game saves both the starting area where you last left off and the Life you had remaining at the time. So be careful when saving, otherwise you might be saving your game where you have very little Life.

CHARACTERS

Here are the characters that appear in this game. The player can only control Red or Blue.

RED

A red-head with a temper, she is an expert marksman, and relatively new to 3YE (the 3rd Eye) as an operative. She's very impulsive, but optimistic and a little naive in nature. She's definitely not afraid to show her emotions. She lost her parents when she was just a child, and upon joining the organization, has considered Blue as her bigger brother.




-  **FORCE:** Shoots a beam of plasma energy.
-  **FIRE:** Shoots a ball of fire that explodes.
-  **CHASER:** Shoots laser darts that seek out and destroy multiple enemies.



BLUE

Blue is a level-headed Gunstar, who rarely shows much emotion. He tends to be sarcastic about things, although he actually does have a strong sense of responsibility. He likes to alleviate stressful moments by teasing Red, whose personality is quite different from his own. Blue was also an orphan, so he can relate to Red.



-  **LIGHTNING:** Fires a stream of electricity.
-  **CHASER:** Shoots laser darts that seek out and destroy multiple enemies.
-  **FIRE:** Shoots a ball of fire that explodes.

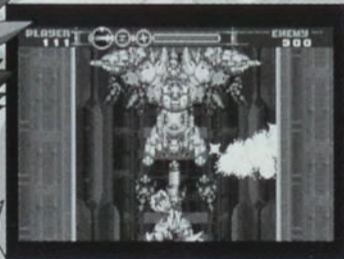
YELLOW

The commander in charge of the Gunstar Super Heroes, she relays the orders of 3YE to Red and Blue. She tends to worry, and thinks of herself as the mother figure for both Red and Blue, despite all of them being of similar age. Her past is shrouded in secrecy, although it's been rumored that she has an older brother.



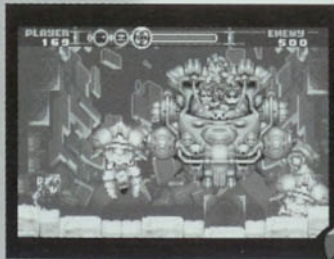
GREEN

A former member of the Gunstar Super Heroes, for reasons unknown, he left and decided to join the Empire. It's said that he holds an ancient relic known as the "Seven Force." He also has a mysterious past that no one seems to know about.



PINK, KAIN, and KOTARO

Pink (center) is a well known bounty hunter. She rarely goes anywhere without her two minions, Kain (left) and Kotaro (right), who both obey her without question. Recently hired by the Empire, they await the Gunstar Super Heroes at Cobit Village.



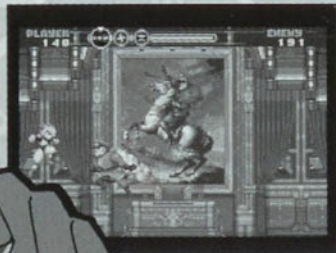
ORANGE

The captain of a huge warship, Orange loves mêlée combat, and is known for his incredible fighting skills and strength.



BLACK

The boss of a casino, Black is a devote follower of the Empire. He awaits the Gunstars at his Fortress, which is filled with many treacherous traps. Not much is known about his past, but it's said to be quite surprising...



SMASH

Not much is known about Colonel Smash except that he obediently follows General Gray. He is eager to face the Gunstars and prove his worth to the general.

GENERAL GRAY

The head of the Empire, not much is known about the General's past. It's only rumored that he plans to resurrect the God of Ruin for unknown reasons and that he's hired Pink, Orange, Green and Black to help him. He has had clashes with 3YE in the past.



CREDITS

The following credits list the staff responsible for the localization and marketing for the North American release of Gunstar Super Heroes. See in-game credits for the complete list of the original development staff.

SEGA OF AMERICA, INC.

CEO

Naoya Tsurumi

President/COO

Simon Jeffery

Senior VP of Product Development

Bill Petro

Director of Localization and QA

Osamu Shibamiya

Localization Producer

Jason Kuo

QA Project Lead

Shawn Dobbins

Testers

Cliff Anderson

Chester Lee

Josh Pfeiffer

Davidson Talag

Vice President, Entertainment Marketing

Scott A. Steinberg

Associate Product Manager

Teri A. Higgins

Creative Services

Chris Mowry

Web Development

Chris Olson

Bridget Oates

Rodwin Pabello

Public Relations

Jennie Sue

Special Thanks

Rick Ribble

Cammy Budd

Tina Painton

Sandy Hatcher

Ayumi Tani

SEGA CORPORATION (SOJ)

CS Marketing Dept. International Team

Shinobu Shindo

Yukiko Kato

IMPORTANT LEGAL INFORMATION

Copying of any video game for any Nintendo system is illegal and is strictly prohibited by domestic and international intellectual property laws. "Back-up" or "archival" copies are not authorized and are not necessary to protect your software. Violators will be prosecuted.

This video game is not designed for use with any unauthorized copying device or any unlicensed accessory. Use of any such device will invalidate your Nintendo product warranty. Nintendo (and/or any Nintendo licensee or distributor) is not responsible for any damage or loss caused by the use of any such device. If use of such device causes your game to stop operating, disconnect the device carefully to avoid damage and resume normal game play. If your game ceases to operate and you have no device attached to it, please contact the game publisher's "Technical Support" or "Customer Service" department.

The contents of this notice do not interfere with your statutory rights.
This booklet and other printed materials accompanying this game are protected by domestic and international intellectual property laws.
Rev-D (L)

***THIS LIMITED WARRANTY IS VALID FOR U.S. AND CANADIAN GAME BOY ADVANCE GAME PAK MANUFACTURED FOR SALE IN AND PURCHASED AND OPERATED IN THE UNITED STATES AND CANADA, ONLY!**

Limited Warranty

Sega of America, Inc. warrants to the original consumer purchaser that the Game Boy Advance Game Pak shall be free from defects in material and workmanship for a period of 90-days from the original date of purchase. If a defect covered by this limited warranty occurs during this 90-day warranty period, the defective Game Pak or component will be replaced free of charge. This limited warranty does not apply if the defects have been caused by negligence, accident, unreasonable use, modification, tampering, or any other causes not related to defective materials or workmanship. This limited warranty does not apply to used software or to software acquired through private transactions between individuals or purchased from online auction sites. Please retain the original or a photocopy of your dated sales receipt to establish the date of purchase for in-warranty replacement. For replacement, return the product, with its original packaging and receipt, to the retailer from which the software was originally purchased. In the event that you cannot obtain a replacement from the retailer, please contact Sega to obtain support.

Obtaining technical support/service

To receive additional support, including troubleshooting assistance, please contact Sega at:

- * web site <http://www.sega.com/usa>
- * e-mail support@sega.com
- * phone 1-800-USA-SEGA

LIMITATIONS ON WARRANTY

ANY APPLICABLE IMPLIED WARRANTIES, INCLUDING WARRANTIES OF MERCHANTABILITY AND FITNESS FOR A PARTICULAR PURPOSE, ARE HEREBY LIMITED TO 90-DAYS FROM THE DATE OF PURCHASE AND ARE SUBJECT TO THE CONDITIONS SET FORTH HEREIN. IN NO EVENT SHALL SEGA OF AMERICA, INC. BE LIABLE FOR CONSEQUENTIAL OR INCIDENTAL DAMAGES RESULTING FROM THE BREACH OF ANY EXPRESS OR IMPLIED WARRANTIES. THE PROVISIONS OF THIS LIMITED WARRANTY ARE VALID IN THE UNITED STATES ONLY. SOME STATES DO NOT ALLOW LIMITATIONS ON HOW LONG AN IMPLIED WARRANTY LASTS, OR EXCLUSION OF CONSEQUENTIAL OR INCIDENTAL DAMAGES, SO THE ABOVE LIMITATION OR EXCLUSION MAY NOT APPLY TO YOU. THIS WARRANTY PROVIDES YOU WITH SPECIFIC LEGAL RIGHTS. YOU MAY HAVE OTHER RIGHTS WHICH VARY FROM STATE TO STATE.

SEGA is registered in the U.S. Patent and Trademark Office. SEGA, the SEGA logo, and Gunstar Super Heroes are either registered trademarks or trademarks of Sega Corporation. All Rights Reserved. © SEGA, 2005. CREATED BY TREASURE 2005. This game is licensed for use with The Nintendo Game Boy Advance System only. Copying and/or transmission of this game is strictly prohibited. Unauthorized rental or public performance of this game is a violation of applicable laws. The ratings icon is a trademark of the Entertainment Software Association. Sega of America, Inc., 650 Townsend Street, Suite 650, San Francisco, CA 94103. All rights reserved. Programmed in Japan. Made and printed in Japan.



This product uses the LC Font by Sharp Corporation, except some characters. LCFONT, LC Font and the LC logo mark are trademarks of Sharp Corporation.

SONIC RUSH™

*Hi-speed Sonic action comes
to the Nintendo DS™ system!*

**COMING
SOON!**

RATING PENDING

RP

CONTENT RATED BY
ESRB

Visit www.esrb.org
for updated rating
information.

NINTENDO DS™

SONIC TEAM™

SEGA®

SEGA OF AMERICA, INC., 650 TOWNSEND STREET, SUITE 650, SAN FRANCISCO, CA 94103. SEGA is registered in the U.S. Patent and Trademark Office. SEGA, the SEGA logo and Sonic Rush are either registered trademarks or trademarks of SEGA Corporation. © SEGA Corporation, 2005. All rights reserved. NINTENDO, NINTENDO DS and the official seal are trademarks of Nintendo. © 2004 Nintendo.

PRINTED IN JAPAN